

Family Playground

Bring your family to Tasmania and your children will discover an island playground; where they can meet Tasmanian devils found in the wild nowhere else on earth, picnic beneath ancient trees and learn about the mysterious world of the platypus.

Rent a car or join a tour in the island's north and make your way out of the city. Heading north from Launceston you can whet your appetite for the natural journey ahead by visiting the Tamar Island Wetlands Reserve and Interpretation Centre, just 10 minutes from the city. Here, a few hundred metres from the highway, Green and Gold frogs can be spotted from a boardwalk.

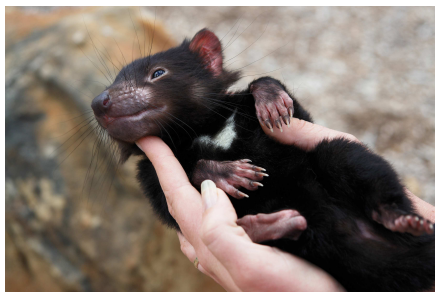
Follow the meandering bends of the Tamar River and delve into the secret life of seahorses at Seahorse World in Beauty Point. Find out why male seahorses are exceptionally good husbands, being the only animal where the male falls pregnant. If you are lucky, you may catch one of these loyal mates, floating happily with his pregnant belly.

Giving a whole new meaning to a hands-on experience, a fully guided tour of Seahorse World offers you the opportunity to touch the seahorses. Supervised participants are required to wear gloves and there is a Touch Pool for children to get close to these underwater wonders.

From one mysterious sea creature to the next, with its confusing features – a duck-like bill and fur - the platypus is an intriguing structural mix. Guided tours at Platypus House in Beauty Point operate daily and cover four platypus pools while sociable echidnas roam free about your feet.



East coast Natureworld is a premier wildlife and ecology park also located on the east coast. The park is located on natural parkland and lagoons, north of Bicheno. Here, you can see free-ranging native Australian wildlife up close, including wombats, kangaroos, bettongs, koalas, pademelons, lorikeets, pelicans and swans. Other features include devilworld, a state of the art, interactive interpretation centre focusing on the Tasmanian devil.



And if you haven't seen enough fascinating species on your tour of the Tamar Valley, wait for dusk and head out on a Low Head Penguin Tour. The tours, which run every night of the year, offer an opportunity to watch Little penguins (or Fairy penguins) scurry up to their burrows.

There are also wildlife sanctuaries around Tasmania where you can see the famous Tasmanian devil. Visit Devils@Cradle, the Tasmanian devil sanctuary at Cradle Mountain where you can also experience a Night Spotlight Tour, a wilderness and wildlife tour in the comfort of a 4WD bus. Alternately, in southern Tasmania, view the devils at Bonorong Wildlife Sanctuary many of them hand-reared in the sanctuary and learn how each of the devils has a unique personality.



At Bonorong Park the Tasmanian devils are active during the day, so you can view them at any time. The park also boasts wombats, koalas, echidnas, birds and many more amazing natives. A real highlight is the free-ranging kangaroos that you can walk right next to. On entry you'll receive complimentary kangaroo food for hand feeding.

The Tasmanian Devil Conservation Park also offers face to face encounters with Tasmanian devils and during a tour you can find out about projects underway to save the devils from a mysterious facial cancer that is threatening the species known as Tasmanian Devil Facial Tumour Disease. The park is a good stopping point en route to or from Port Arthur Historic Site on the Tasman Peninsula where the family can delve into the lives of Australian convicts.

There is plenty of family friendly fun in Tasmania, from milking sheep at Grandveve Cheesery in Woodbridge and tasting some delicious cheeses through to bushwalks in Mt Field National Park revealing beautiful waterfalls and safe swimming beaches dotted up the east coast.

There are also fantastic accommodation options for families, including a special experience available at Curringa Farm just one hour from Hobart. The farm stay offers secluded accommodation and tours where the children can watch sheep shearing, sit by Meadowbank Lake at lunch time and stare up at the star-filled sky after dusk.

If your family enjoys fresh berries, there's no better place to visit than Sorell Fruit Farm. Tasmania's cool climate gives extra flavour to its berry fruits and cherries, which are the specialty of this farm. The range of berries is astounding - strawberries, raspberries, tayberries, boysenberries, loganberries, silvanberries, blackcurrants. From November to May several berries are in season, ready for the whole family to pick their own.



There's also plenty of adrenalin-packed fun for the family with jet boating available on the River Derwent in Huonville (about half an hour south of Hobart) and also on Tasmania's wild west coast with tours departing from Strahan. Each tour offers the excitement of experiencing Tasmania's scenic waterways with the wind in your hair.

Affordable fun, fascinating wildlife and exciting adventure await your family on a trip to Tasmania!

Visit: www.discovertasmania.com

Package:

4 days / 3 nights West or East Coast Tasmania self-drive package from S\$615

Includes:

3 nights stay in Tasmania

4 days car rental

Choice of 3 family activities

Seahorse World, Devils@Cradle, Wildlife night spotting tour, Tahune AirWalk, Port Arthur Historic Site, Cataract Gorge chairlift ride, or East Coast Nature World

Package Enquiry:

Tel: 65-6238 2766

Email: e_retail@jetabout.com.sg