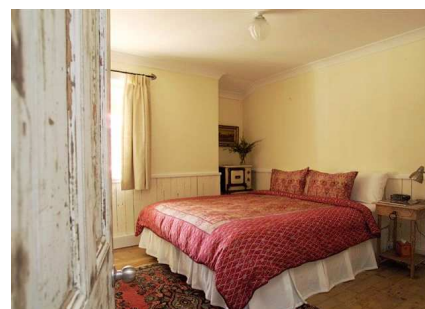


## Blue Mountains

Located less than two hours drive from Sydney, the Blue Mountains offers a natural wonderland of untamed bush, spectacular rock formations and native wildlife. This World Heritage Area is a great getaway to experience and appreciate the unique environment and will provide you with a holiday you will never forget! **Leura** is a very pretty town with a main street perfect for strolling and browsing. By day enjoy the many cafes, interesting shops and galleries. At night, feel the romance as the street twinkles with fairy lights.

**Old Leura Dairy** (B&B cottages) ... Quotes from some Singaporean guests ...

"What a lovely place! It is definitely an experience for city dwellers like us." "What a charming and cozy place you've built, we will definitely come back and also recommend it to others." "We have enjoyed the stay, appreciated the awareness of recycling and environmental preservation and we think this is the best bed and breakfast in the Blue Mountains .... The décor is priceless!!"



## 6 Days 4 Nights Sydney & Blue Mountains Country Getaway from \$1,218

(Travel validity: 1 April to 29 December 2012)

*Bonus: 3<sup>rd</sup> night FREE at Park Royal Darling Harbour (Apr-Sep'12)*

### Package includes:

- ❖ Return economy airfares to Sydney on Qantas Airways (booking class "V").
- ❖ 3 days car rental on Hertz Car Group 5 – Toyota Camry or similar (pick up from Sydney downtown).
- ❖ 2 nights stay at Park Royal Darling Harbour (Standard room) (room only).  
**BONUS: 3<sup>rd</sup> night FREE for stay between 1Apr-30Sep'12 (must be consecutive stay)!!**
- ❖ 2 nights stay at Old Leura Dairy in Blue Mountains (The Studio for 2 persons. The Milking Shed for 3 to 4 persons).
- ❖ Option to extend your stay.

Price Per Person in SGD	Adult			Child		
6D / 4N Package	1A	2A	3A	2A1C	2A2C	1A1C
1Apr-Sep'12	1918	1218	1158	748	568	1098
1Oct-Dec'12*	2058	1288	1208	748	568	1168
Extension Night (Per person in SGD)	1A	2A	3A	2A1C	2A2C	1A1C
Park Royal Darling Harbour (room only)						
1Apr-Sep'12	278	139	120	0	0	139
1Oct-29Dec'12	345	173	143	0	0	173
Old Leura Dairy (room only) (1Apr'12-31Mar'13)	278	140	155	180	90	140

### Important Notes:

- ❖ Travel validity: Travel completed by 29Dec'12
- ❖ Price excludes airport taxes, security tax and other applicable surcharges.
- ❖ **Subject to Hertz car rental high season surcharge at \$514 per car per day (1Dec'12-31Mar'13).**
- ❖ **Old Leura Dairy** – Cancellation made 14 days or less prior to arrival will incur a cancellation fee of 50%. Cancellation within 14days 100%. Change of date within 14 days considered cancellation!
- ❖ Payment may be made in Singapore Dollars by cash, NETS, cheques and credit cards.
- ❖ Due to fluctuation on currency exchange and changes on airfare, prices are subject to change without prior notice.
- ❖ Please obtain a copy of the Booking Conditions for full details on our Terms & Conditions.

### Airline's surcharge (subject to change without prior notice):

Booking Class	Low Season	
	Adult	Child
L (both ways)	50	40
M (both ways)	150	110
K (both ways)	350	260

Please turn over for recommendation on 'Must See' & 'Must Do' & surcharge for other booking classes.

## Must See & Must Do!!

### **The Rooster Restaurant**

Serving fine, French influenced cuisine in the heart of the Blue Mountains for many years, under the guidance of owner and chef Michael Hagbeck. In winter, the restaurants' open fireplaces will warm your spirits, while in summer enjoy spectacular views over the Jamison Valley and the Blue Mountains National Park from the enclosed verandah while you dine.

Address: 48 Merriwa St, Katoomba Tel: 02 4782 1206 Web: [www.jamisonhouse.com](http://www.jamisonhouse.com)

### **Silk's Brasserie Leura**

One of the most atmospheric dining experiences in the Blue Mountains. Located in a historic building with sensuous interiors, chequerboard floors and winter fireplace, this sophisticated brasserie's menu utilises the best of Australian and regional produce to create an award-winning modern Australian cuisine. Crisp-linen clad tables, a smart wine list and the aroma of bread baking on the premises compliment this sophisticated yet intimate restaurant.

Address: 128 The Mall, Leura Tel: 02 4784 2534 Web: [www.silksleura.com](http://www.silksleura.com)

### **Bygone Beautys Tearoom & Teapot Collection**

An Antique Emporium and Tearoom at Leura, housing the world's largest private collection of teapots spanning three centuries. With over 3,500 individual teapots on display. Enjoy a fine afternoon tea or a light lunch. Bygone Beautys serves one of the best Devonshire Teas in the Blue Mountains.

Browse amongst beautiful pieces from bygone days where you may find a treasure from past days, a souvenir to take home with you, or that perfect gift for someone special. We have estate jewellery as well as new jewellery, furniture, lamps, giftware and much more on display. Opening Times - Public Holiday: Closed Christmas Day & New Year's Day only. .... 10am to 5.30pm 7 days.

Street Address : 20 - 22 Grose Street, Leura Te: 02 4784 3117 Web: [www.bygonebeautys.com.au](http://www.bygonebeautys.com.au)

### **Scenic World Blue Mountains.....Discover another world.**

Scenic World blue mountains is suitable for visitors of all ages; it is located near the Three Sisters at Katoomba. Did you know that the **Scenic Skyway** with its world first Electro-Sceni Glass floor completes the trip over to the other side of the valley to a viewing platform? This amazing ride takes in all of the iconic views of the Blue Mountains World Heritage Wilderness including the Three Sisters, Moutn Solitary, The Jamison Valley and Katoomba Falls.

From high over the valley the **Cableway** descends smoothly into the ancient rainforest of the World Heritage listed Blue Mountains. The Scenic Railway is the world's steepest incline railway, descending 415 metres down the escarpment at a maximum grade of 52 degrees. This thrilling and unique ride passes through an 80 metre tunnel and a sunlit tree clad gorge, before resting at the bottom station in the valley.

The bottom platform of the **Scenic Railway** is connected by a 390 metre boardwalk to the Cableway bottom station. The boardwalk passes through a temperate rainforest and also passes the entrances to the old coal mines, where you can view an audio visual display and imagine the life of a miner living in the valley at the turn of the century. Beyond the Cableway bottom station you can walk a further 700 meters to the rainforest room, which is located deep in the valley. Altogether Scenic World has over two and a half kilometers of elevated timber walkways affording visitors of all levels of fitness and ability to enjoy the World Heritage Wilderness that make the Blue Mountains so famous. Scenic World also has a restaurant with a revolving floor, a new cafe and viewing area, a souvenir shop, a free carpark and a 100 seat cinema.

Opening Times: Open every single day of the year ..... 9.00am - 5.00pm Daily (Last trip is at 4.50pm)

Street Address : Corner of Violet Street & Cliff Drive, Katoomba New South Wales 2780 Australia

Tel: 02 4780 0200 Web: [www.scenicworld.com.au](http://www.scenicworld.com.au)

For bookings and enquiries, kindly contact us at

15 Cairnhill Road, #06-05 Cairnhill Place, Singapore 229650. Tel: 6 734 1818 (Public), 6 738 3118 (Trade) Fax: 6 734 0128 (Public), 6 238 2809 (Trade)

Website: [www.qantasholidays.com.sg](http://www.qantasholidays.com.sg) Email: [sinjetabout@holidaytours.net](mailto:sinjetabout@holidaytours.net)